

Implant Prosthetics Guide

Screw-Retained Restorations

- ▲ A screw-retained restoration is sent to the clinician as a single piece.
- ▲ A titanium screw is used to attach the restoration to the implant in the mouth.
- ▲ After the restoration is fully seated, composite is used to close the screw access hole.

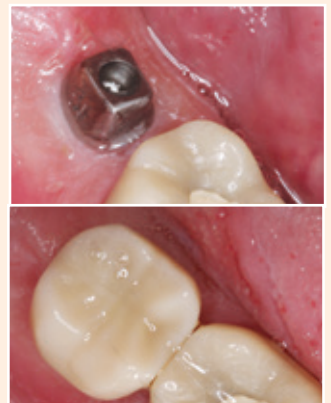
Clinical dentistry by Dr. Timothy F. Kosinski



Custom Titanium Abutments

- ▲ Each custom titanium abutment is patient-specific and milled from a titanium blank.
- ▲ The abutment is secured to the implant with a titanium screw.
- ▲ A suitable cement of choice is used to affix the final restoration to the custom abutment in the mouth.

Clinical dentistry by Dr. Timothy F. Kosinski



Custom Hybrid Abutments

- ▲ Each custom hybrid abutment is patient-specific and milled from zirconia, and it features a titanium base.
- ▲ The abutment is secured to the implant with a titanium screw.
- ▲ A suitable cement of choice is used to affix the final restoration to the custom abutment in the mouth.

Clinical dentistry by Dr. Jack A. Hahn

